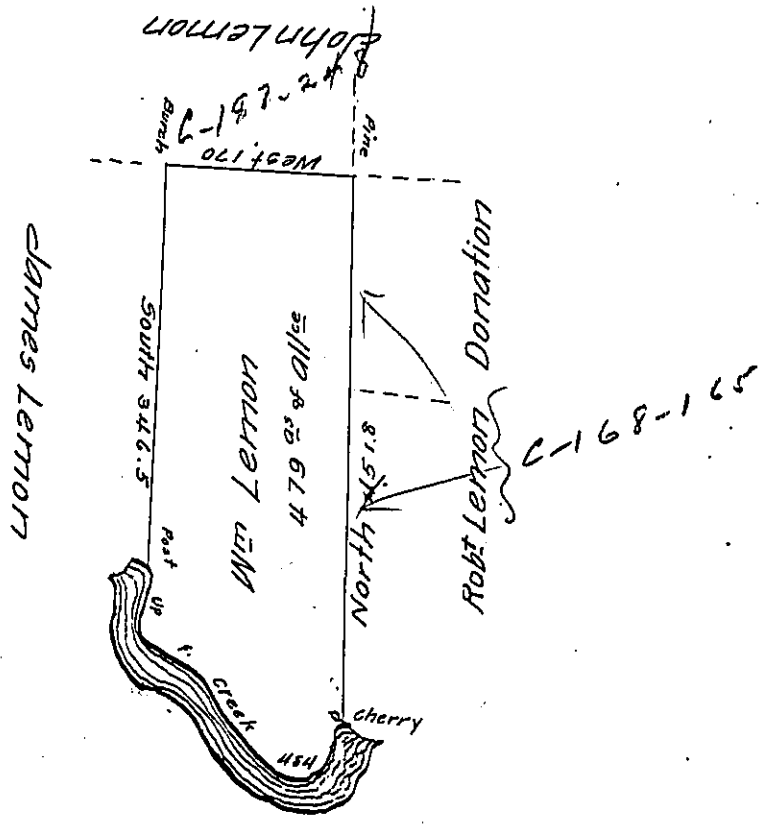


River Courses

- N. 71° E. 5.5
 - South 10
 - S. 32° W. 62
 - S. 27° E. 19
 - N. 55° E. 36
 - N. 91° E. 16
 - S. 12° E. 12
 - S. 61° W. 12.
 - S. 25 3/4° W. 25
 - S. 48° E. 19
 - N. 61° E. 32
 - S. 23° E. 54
 - S. 46° E. 28
 - S. 63 1/2° E. 26
 - S. 76° E. 35
 - N. 49° E. 20
 - N. 11 1/2° W. 36
 - N. 19 1/2° E. 19
 - S. 75° E. 8
- Ps. 484.5



Situate on and adjoining the West side of French Creek in
 ALIX. County Containing 479 Acres and allowance of six p. Cent for
 Roads &c. Surv^d the 29th day of October 1795. In pursuance of his
 Improvement dated the 12th June 1795

W^m Power D.Y. 95

To Danl. Brodhead Esq^r }
 Surveyor General }

N.B. This survey Exceeds the Quantity I am permitted by Law
 to return. Their being no Vacant Lands adjoining to embrace
 the overpluss. Therefore it is requested the survey may be ad-
 mitted

IN TESTIMONY that the above is a copy of the original remaining on file in
 the Department of Internal Affairs of Pennsylvania, made
 conformably to an Act of Assembly approved the 16th day of
 February, 1833, I have hereunto set my Hand and caused
 the Seal of said Department to be affixed at Harrisburg,
 this tenth day of August 1904

George D. Brown
 Secretary of Internal Affairs.